



**RAFFA'S**

**SLICERS**

**RAFFAS.CO.ZA**



# EQUIPMENT

## SLICERS



**avenia**

**AVENIA**

**SLA3220**

SLICER AVENIA - 220MM

**SPECIFICATIONS**

BLADE DIAMETER: 220MM  
 MAXIMUM SLICE THICKNESS: 10MM  
 CUT CAPACITY: 160 X 190MM  
 NET WEIGHT: 13KG



**avenia**

**AVENIA**

**SLA3250**

SLICER AVENIA - 250MM

**SPECIFICATIONS**

BLADE DIAMETER: 250MM  
 MAXIMUM SLICE THICKNESS: 12MM  
 CUT CAPACITY: 170 X 190MM  
 NET WEIGHT: 14.5KG



**avenia**

**AVENIA**

**SLA3300**

SLICER AVENIA - 300MM

**SPECIFICATIONS**

BLADE DIAMETER: 300MM  
 MAXIMUM SLICE THICKNESS: 17MM  
 CUT CAPACITY: 240 X 150MM  
 NET WEIGHT: 24KG

**NEW**

**SmartChef**

**SMARTCHEF**

**MSS0220**

SLICER - 220MM BLADE

**SPECIFICATIONS**

MODEL: SMARTCHEF HBS-220  
 ELECTRICITY: 0.12KW, 220V, SINGLE PHASE  
 DIMENSIONS: 480 X 395 X 360MM HIGH  
 WEIGHT: 15KG  
 BLADE DIAMETER: 220MM  
 SLICE THICKNESS: 0.2 TO 12MM  
 MAX SLICE WIDTH: 160MM



**NEW**

**SmartChef**

**SMARTCHEF**

**MSS0250**

SLICER - 250MM BLADE

**SPECIFICATIONS**

MODEL: SMARTCHEF HBS-250  
 ELECTRICITY: 0.15KW, 220V, SINGLE PHASE  
 DIMENSIONS: 540 X 490 X 420MM HIGH  
 WEIGHT: 16KG  
 BLADE DIAMETER: 250MM  
 SLICE THICKNESS: 0.2 TO 12MM  
 MAX SLICE WIDTH: 180MM



**NEW**

**SmartChef**

**SMARTCHEF**

**MSS0300**

SLICER - 300MM BLADE

**SPECIFICATIONS**

MODEL: SMARTCHEF HBS-300  
 ELECTRICITY: 0.25KW, 220V, SINGLE PHASE  
 DIMENSIONS: 577 X 493 X 436MM HIGH  
 WEIGHT: 22KG  
 BLADE DIAMETER: 300MM  
 SLICE THICKNESS: 0.2 TO 15MM  
 MAX SLICE WIDTH: 200MM



## SLICERS

### FEATURES

- Operates automatically, operator can do other work while machine cuts automatically
- Ideal for polonies in high volume mass catering establishments
- Automatic carriage return saves time and effort

**2** YEAR WARRANTY



### START (AUTO) - 300MM

SLS1301

#### SPECIFICATIONS

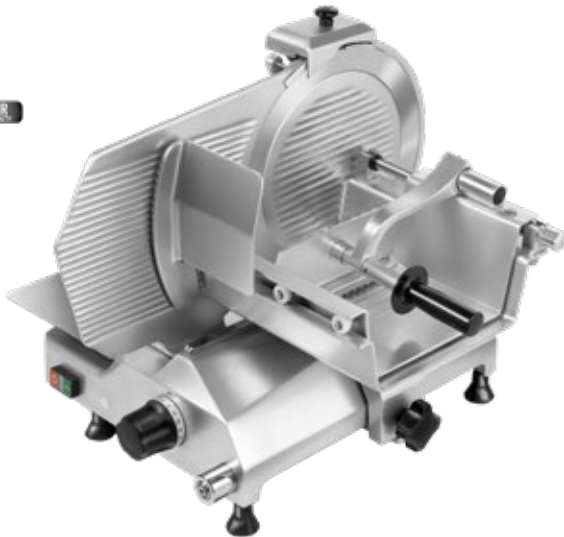
CUT CAPACITY	: 280 X 160MM
CUT THICKNESS	: 1 - 20MM
POWER	: 0.42kW - 230V - 50Hz
DIMENSIONS	: 660 X 665 X 595MM
BLADE DIAMETER	: 300MM
VARIABLE SPEED	: 0 - 60 slices P/min
WEIGHT	: 43KG

#### Note

Built-in blade sharpener CSE: Clear slice exit

Double platform designed for high production outputs in butcheries and supermarkets, perfect for slicing raw meat for steaks. Adjustable cut thickness from 1MM to 30MM. Vertical slicer 90° - less product friction and a more comfortable working position.

**2** YEAR WARRANTY



### BETA - 350MM

SLB0350

#### SPECIFICATIONS

CUT CAPACITY	: 270 X 205MM
CUT THICKNESS	: 1 - 30MM
POWER	: 0.27kW - 230V - 50Hz
DIMENSIONS	: 840 X 690 X 555MM
BLADE DIAMETER	: 350MM
WEIGHT	: 36KG

#### Note

Built-in blade sharpener CSE: Clear slice exit



## SLICERS

### SAFE BLADE REMOVAL (SBR)

The unique Safe Blade Removal System of the Deluxe Slicer models allows for quick and safe removal of the blade during slicer cleaning, allowing multiple product processing with very little down time.



Ideal for cold cuts in medium sized establishments with some extra unique features:

### FEATURES

- Safe blade removal device to facilitate easy cleaning of the unit
- S/Steel bearings to prolong the life of the blade drive
- Promotes a smooth sliding motion



### START - DELUXE - 300MM SLS3301

<b>SPECIFICATIONS</b>	
CUT CAPACITY	: 240 X 160MM
CUT THICKNESS	: 1 - 20MM
POWER	: 0.27kW - 230V - 50Hz
DIMENSIONS	: 650 X 560 X 470MM
BLADE DIAMETER	: 300MM
WEIGHT	: 29KG

#### OTHER ORDER CODES

### START - FROZEN MEAT SLICING BLADE ONLY SLS9300

#### Note

Built-in blade sharpener

Designed to slice the perfect piece of cheese, Quantanium coated surface prevents sticking and makes using and cleaning a pleasure. Avoid cross contamination of your dairy and meat products by using this dedicated cheese slicer for all your cheese requirements.



### START - CHEESE - 300MM SLS2301

<b>SPECIFICATIONS</b>	
CUT CAPACITY	: 240 X 160MM
CUT THICKNESS	: 1 - 20MM
POWER	: 0.27kW - 230V - 50Hz
DIMENSIONS	: 650 X 560 X 470MM
BLADE DIAMETER	: 300MM
WEIGHT	: 29KG

#### Note

Built-in blade sharpener

Ideal for cold cuts and processed meats in medium size establishments



### START - 300MM SLS0301

<b>SPECIFICATIONS - SLS0301</b>	
CUT CAPACITY	: 240 X 160MM
CUT THICKNESS	: 1 - 20MM
POWER	: 0.27kW - 230V - 50Hz
DIMENSIONS	: 650 X 560 X 470MM
BLADE DIAMETER	: 300MM
WEIGHT	: 29KG

#### OTHER ORDER CODES

### START - FROZEN MEAT SLICING BLADE ONLY SLS9300

#### Note

Built-in blade sharpener

## SLICERS

Multipurpose slicer ideal to slice bread, processed meats, parma ham and carpaccio in coffee shops, small restaurants and take-aways. Motor is situated below the blade which allows for larger moving area and larger cuts. Not suited for supermarket or institutional use.



### PRIMA - 300MM SLP0300

<b>SPECIFICATIONS</b>	
CUT CAPACITY	: 245 X 175MM
CUT THICKNESS	: 1 - 15MM
POWER	: 0.22kW - 230V - 50Hz
DIMENSIONS	: 625 X 430 X 415MM
BLADE DIAMETER	: 300MM
WEIGHT	: 25KG

#### Note

CSE - clear slice exit



### STELLINA - 220MM SLS0220

<b>SPECIFICATIONS</b>	
CUT CAPACITY	: 195 X 135MM
CUT THICKNESS	: 1 - 14MM
CUT LENGTH	: 195MM
CUT HEIGHT	: 135MM
POWER	: 0.17kW - 230V - 50Hz
DIMENSIONS	: 470 X 420 X 340MM
BLADE DIAMETER	: 220MM
WEIGHT	: 15KG

#### Note

Built-in blade sharpener



## SLICERS

2 YEAR

**XPRESS - 220MM**  
SLX0220

<b>SPECIFICATIONS</b>	
CUT CAPACITY	: 150 X 200MM
CUT THICKNESS	: 1 - 15MM
POWER	: 0.13kW - 230V - 50Hz
DIMENSIONS	: 300 X 420 X 340MM
BLADE DIAMETER	: 220MM
WEIGHT	: 12.5KG

**Note**

Built-in blade sharpener

Ideal for medium size workloads in small restaurants and take-away operations

**ARGENTA - 250MM**  
SLA0250

<b>SPECIFICATIONS</b>	
CUT CAPACITY	: 230 X 145MM
CUT THICKNESS	: 1 - 15MM
CUT LENGTH	: 230MM
CUT HEIGHT	: 145MM
POWER	: 0.21kW - 230V - 50Hz
DIMENSIONS	: 530 X 430 X 375MM
BLADE DIAMETER	: 250MM
WEIGHT	: 18KG

**ARGENTA - 280MM**  
SLA0280

<b>SPECIFICATIONS</b>	
CUT CAPACITY	: 230 X 170MM
CUT THICKNESS	: 1 - 15MM
CUT LENGTH	: 230MM
CUT HEIGHT	: 170MM
POWER	: 0.21kW - 230V - 50Hz
DIMENSIONS	: 550 X 430 X 390MM
BLADE DIAMETER	: 280MM
WEIGHT	: 20KG

**Note**

Built-in blade sharpener

2 YEAR



NEW

## SLICERS

With three sizes to choose from, the Avenia meat slicers are an excellent choice for those who want superior quality at an affordable price. The S/Steel blades are durable, easy to clean, and the calibrated knob makes it very easy to adjust the meat thickness accurately.

**FEATURES**

- Precision carriage slides
- Safety guard
- Easy to adjust the thickness of the cut
- High quality aluminium finish
- Up to 5 hours of continuous use
- Blade sharpener

**220MM**  
SLA3220

<b>SPECIFICATIONS</b>	
BLADE DIAMETER	: 220MM
MAXIMUM SLICE THICKNESS	: 10MM
CUT CAPACITY	: 160 X 190MM
POWER	: 0.28kW - 230V - 50Hz
NET WEIGHT	: 13KG

**250MM**  
SLA3250

<b>SPECIFICATIONS</b>	
BLADE DIAMETER	: 250MM
MAXIMUM SLICE THICKNESS	: 12MM
CUT CAPACITY	: 170 X 190MM
POWER	: 0.42kW - 230V - 50Hz
NET WEIGHT	: 14.5KG

**300MM**  
SLA3300

<b>SPECIFICATIONS</b>	
BLADE DIAMETER	: 300MM
MAXIMUM SLICE THICKNESS	: 17MM
CUT CAPACITY	: 240 X 150MM
POWER	: 0.52kW - 230V - 50Hz
NET WEIGHT	: 24KG

## FEATURES

- The slicer is built with polished cast aluminum
- Easy to use and clean with little maintenance
- Double ball bearing blade support
- Double stone sharpening accessory included
- Strong fan silenced with professional motor
- Very sturdy design
- The blade is made from non-sticking steel
- Sliding carriage on Teflon bushings with a heavy duty food holder
- Two button on-off switch
- Fitted with 4 non-slip feet



## 220mm BLADE

### SPECIFICATIONS

MODEL	Celme FY220
ELECTRICITY	0.16kW, 220V, Single Phase
DIMENSIONS	440 x 360 x 330mm high
WEIGHT	10kg
BLADE DIAMETER	220mm
SLICE THICKNESS	0.2 to 16mm
USEFUL CUT	220 x 165mm

ORDER CODE

MSC0220



## 275mm BLADE

### SPECIFICATIONS

MODEL	Celme Family 275
ELECTRICITY	0.16kW, 220V, Single Phase
DIMENSIONS	530 x 420 x 390mm high
WEIGHT	15kg
BLADE DIAMETER	275mm
SLICE THICKNESS	0.2 to 16mm
USEFUL CUT	230 x 180mm

ORDER CODE

MSC0275



## 300mm BLADE

### SPECIFICATIONS

MODEL	Celme Family 300
ELECTRICITY	0.22kW, 220V, Single Phase
DIMENSIONS	580 x 470 x 420mm high
WEIGHT	21kg
BLADE DIAMETER	300mm
SLICE THICKNESS	0.2 to 16mm
USEFUL CUT	245 x 195mm

ORDER CODE

MSC0300



## FEATURES

- Body manufactured from polished cast aluminium
- Stainless Steel blade
- Waterproof emergency shut-off switch
- Adjustable slice thickness
- Belt drive
- Integrated blade sharpener
- Perspex protector guard
- Fitted with non-slip feet



## 195mm BLADE

### SPECIFICATIONS

**MODEL** SmartChef HBS-195JS  
**ELECTRICITY** 0.12kW, 220V, Single Phase  
**DIMENSIONS** 420 x 380 x 315mm high  
**WEIGHT** 12kg  
**BLADE DIAMETER** 195mm  
**SLICE THICKNESS** 0.2 to 12mm  
**MAX SLICE WIDTH** 150mm

**ORDER CODE** MSS0195



## 220mm BLADE

### SPECIFICATIONS

**MODEL** SmartChef HBS-220  
**ELECTRICITY** 0.12kW, 220V, Single Phase  
**DIMENSIONS** 480 x 395 x 360mm high  
**WEIGHT** 15kg  
**BLADE DIAMETER** 220mm  
**SLICE THICKNESS** 0.2 to 12mm  
**MAX SLICE WIDTH** 160mm

**ORDER CODE** MSS0220



## 250mm BLADE

### SPECIFICATIONS

**MODEL** SmartChef HBS-250  
**ELECTRICITY** 0.15kW, 220V, Single Phase  
**DIMENSIONS** 540 x 490 x 420mm high  
**WEIGHT** 16kg  
**BLADE DIAMETER** 250mm  
**SLICE THICKNESS** 0.2 to 12mm  
**MAX SLICE WIDTH** 180mm

**ORDER CODE** MSS0250



## 300mm BLADE

### SPECIFICATIONS

**MODEL** SmartChef HBS-300  
**ELECTRICITY** 0.25kW, 220V, Single Phase  
**DIMENSIONS** 577 x 493 x 436mm high  
**WEIGHT** 22kg  
**BLADE DIAMETER** 300mm  
**SLICE THICKNESS** 0.2 to 15mm  
**MAX SLICE WIDTH** 200mm

**ORDER CODE** MSS0300

